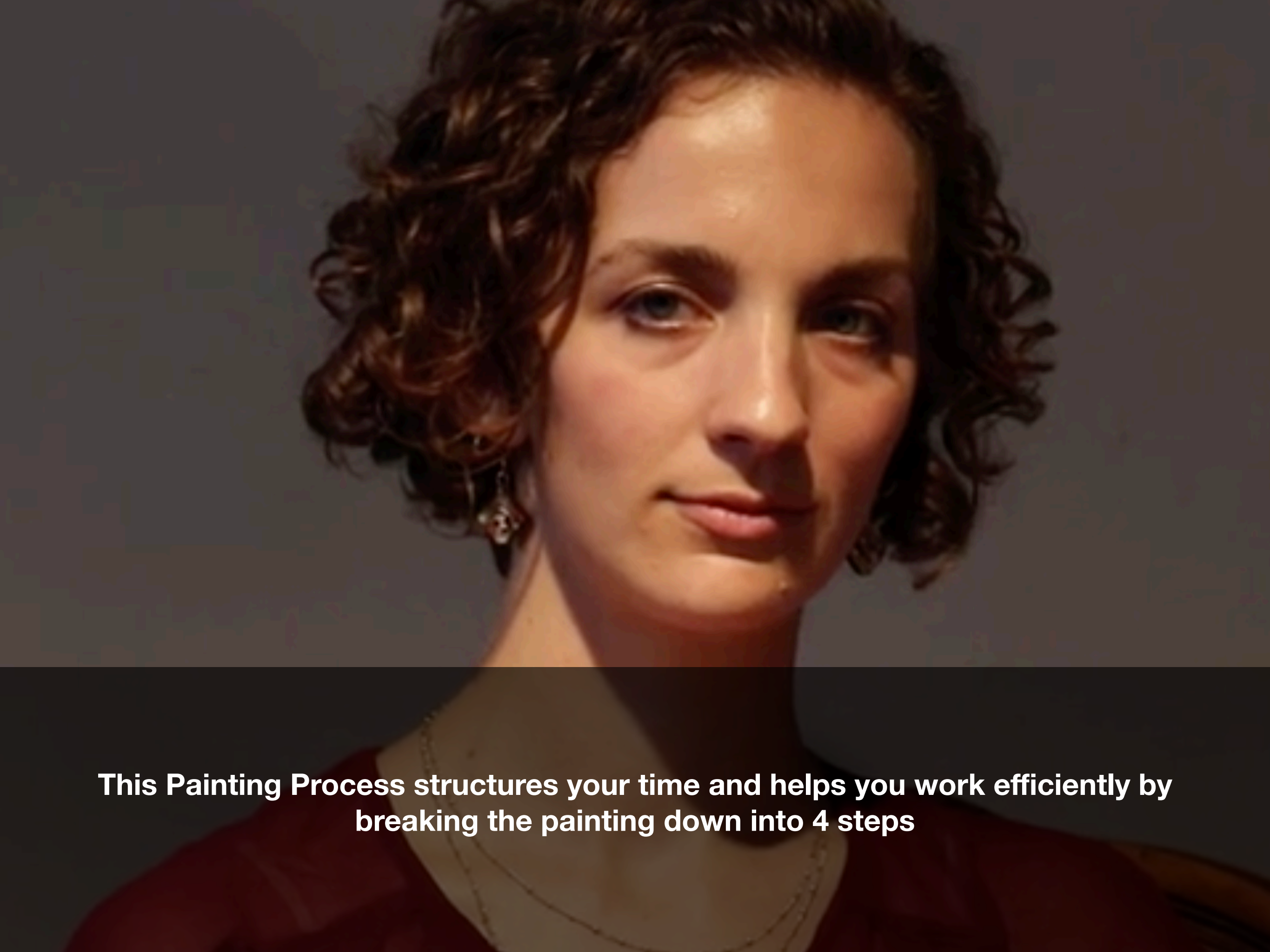




Dominque Medici

painting process

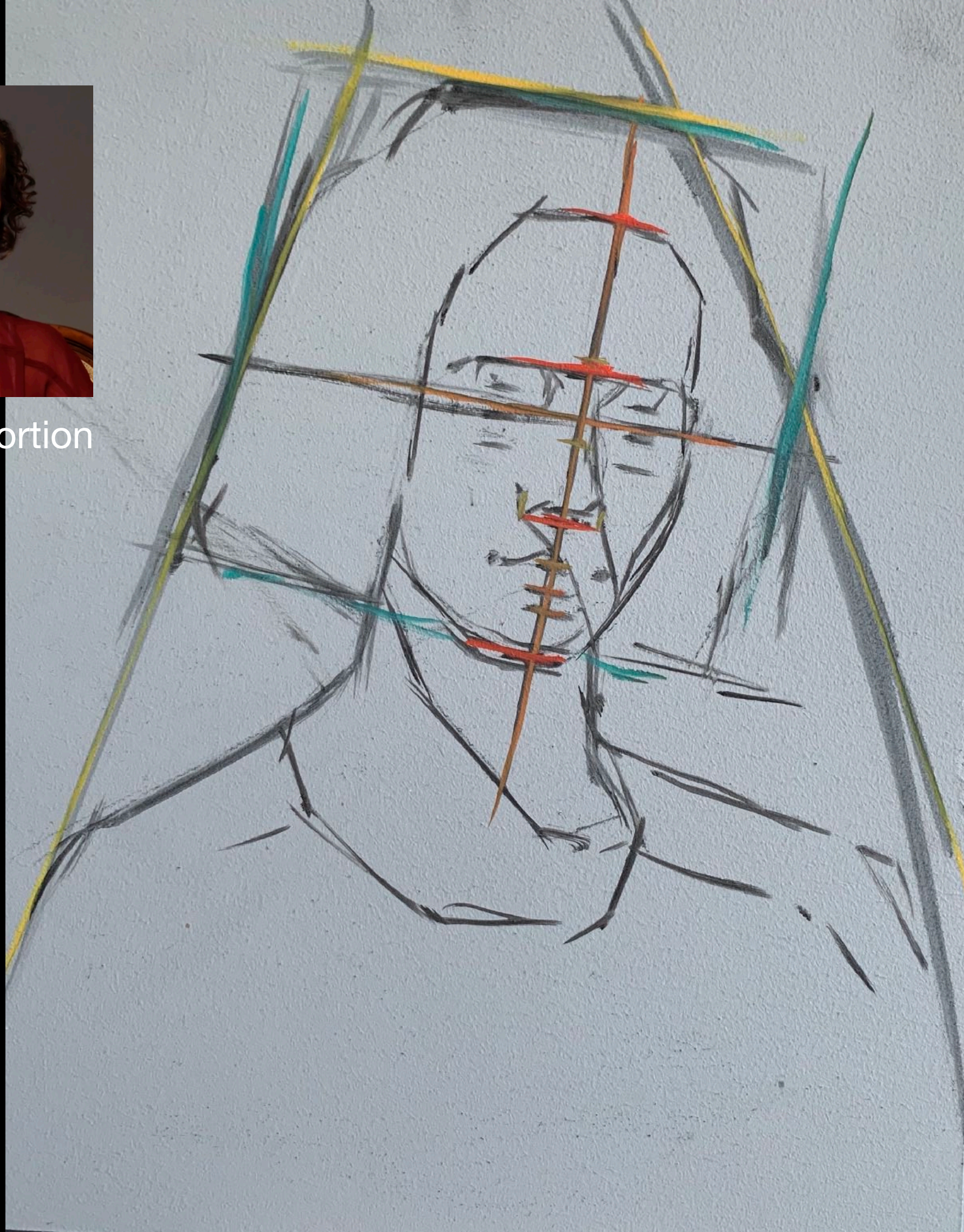
November 2021



This Painting Process structures your time and helps you work efficiently by breaking the painting down into 4 steps

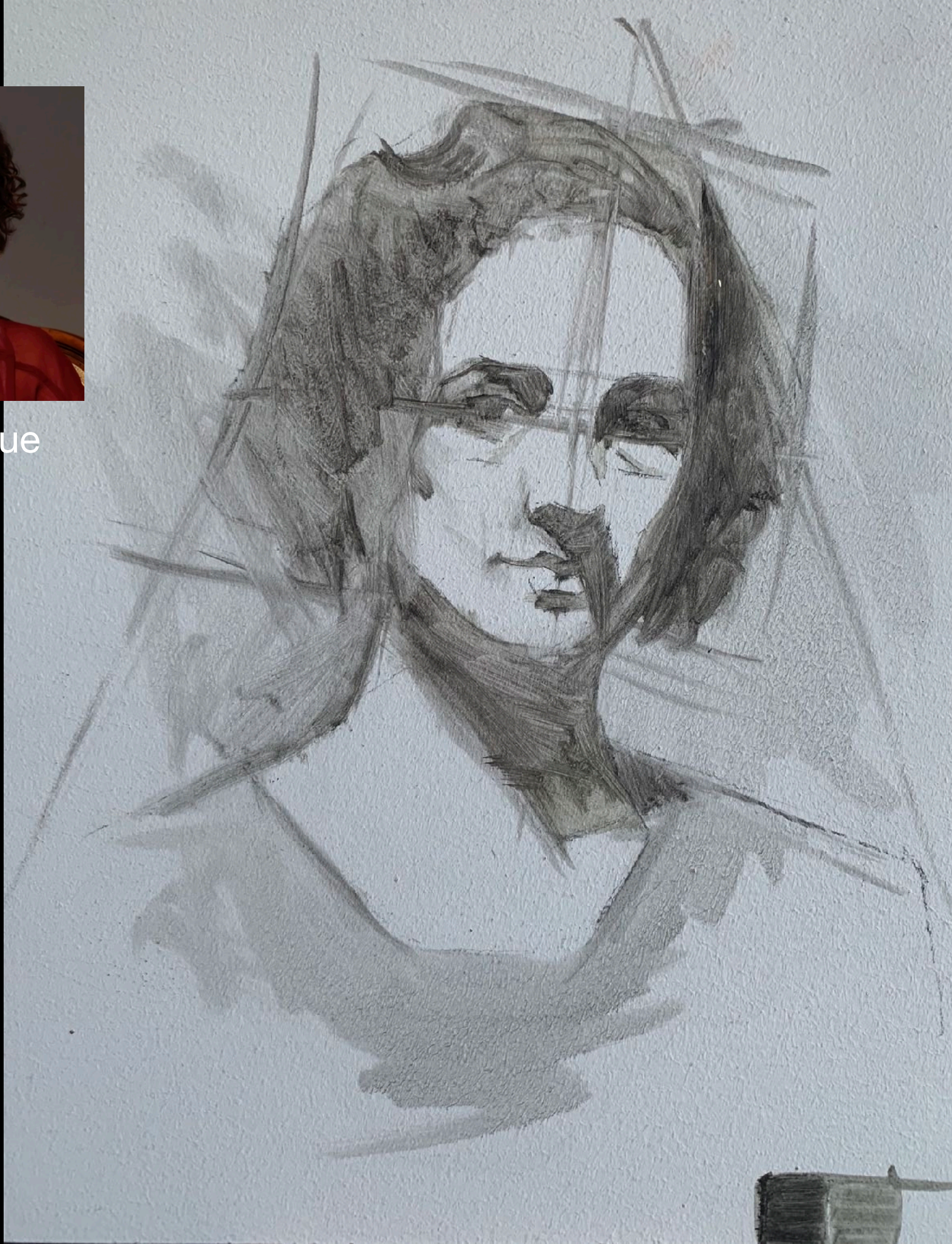


Step 1 - Proportion



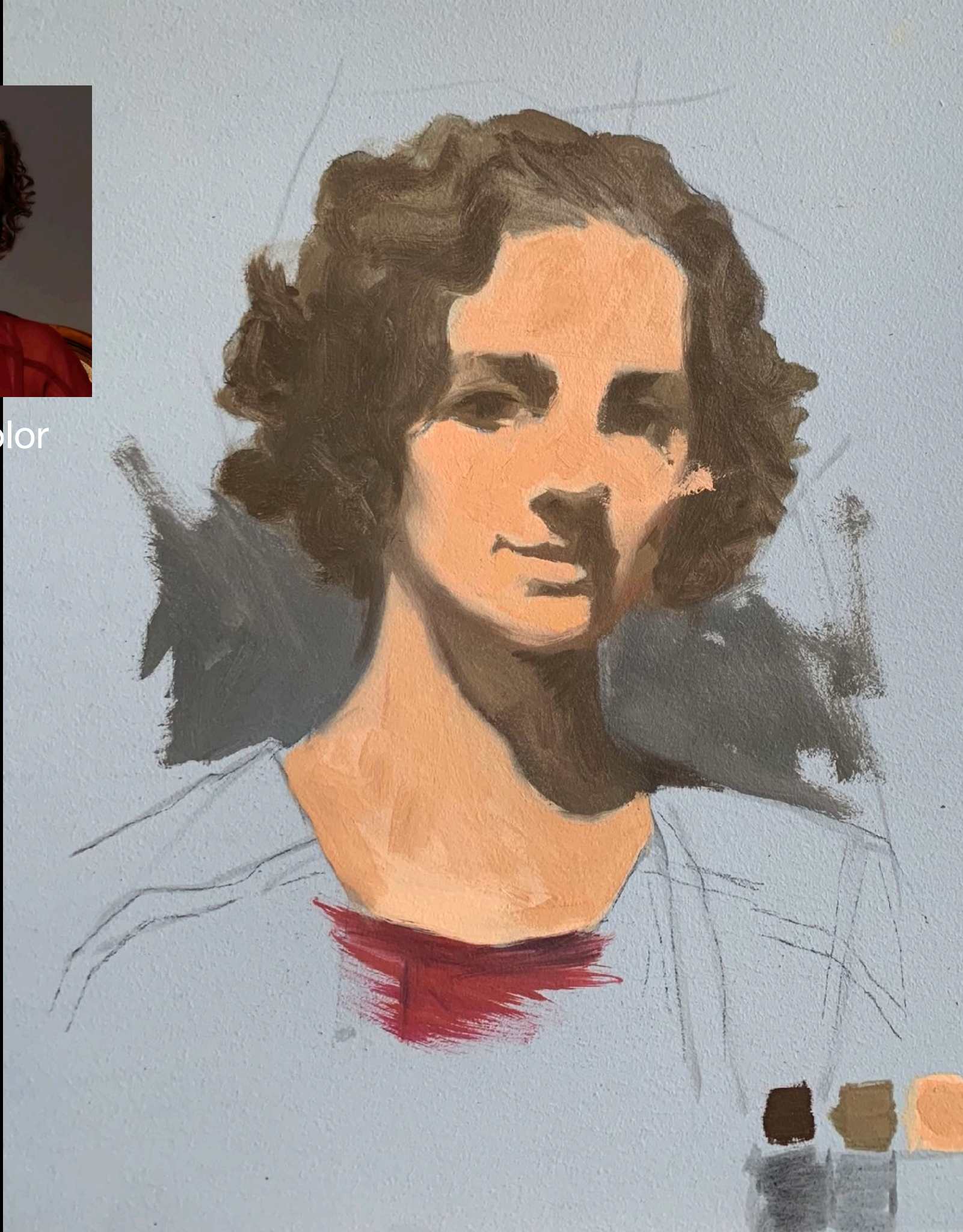


Step 2 - Value



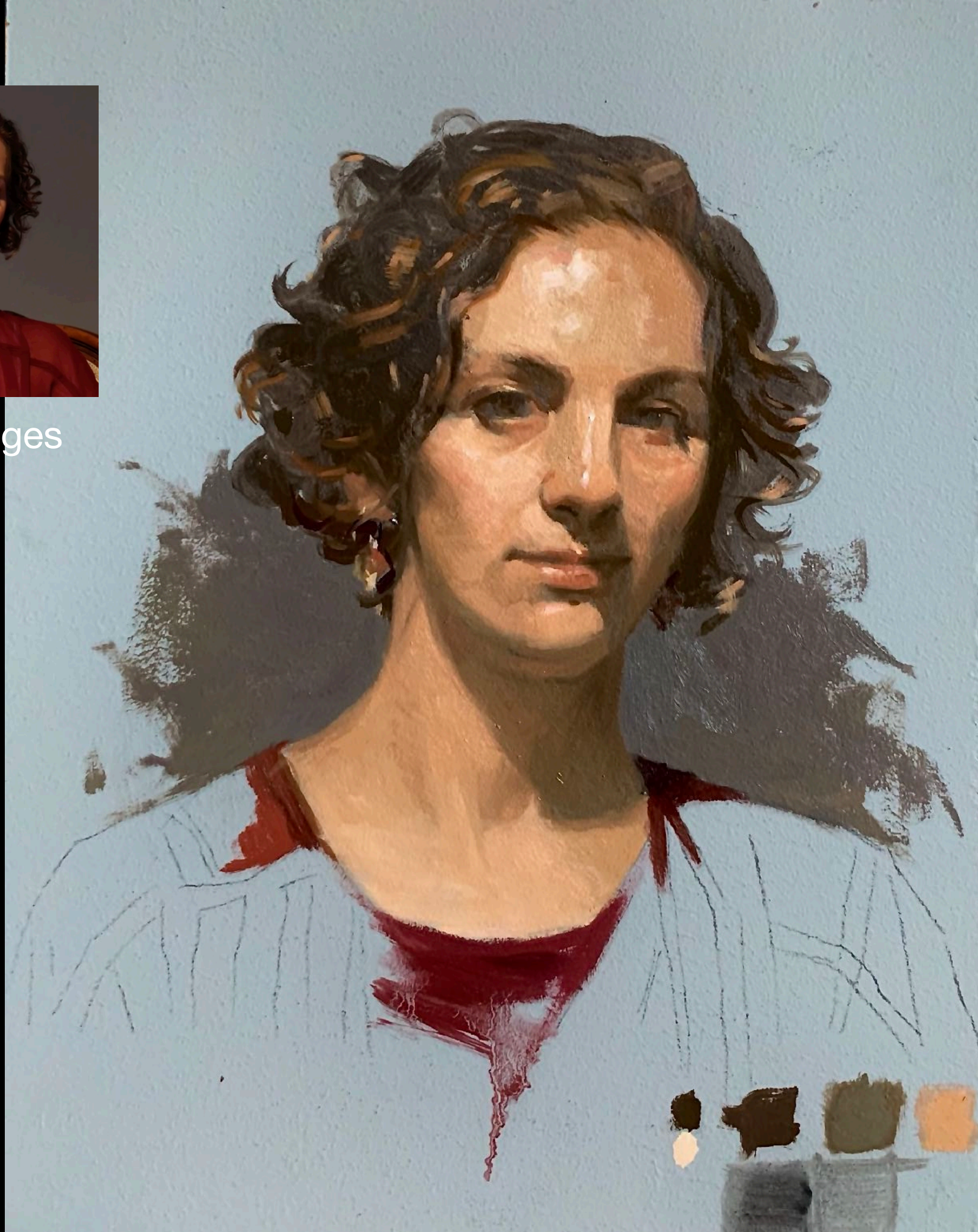


Step 3 - Color





Step 4 - Edges



DM Painting Process in 4 steps

1. Proportion

- Scale
- Composition
- Construction
- Structure
- No drawing/ only big shapes

2. Value

- Simplify to 3 average values
- light
- mid
- dark
- Block in 3 value shapes
- Refine forms

3. Color

- translate 3 average values
- into 3 average colors (Make Pools) light
- mid
- dark
- Block in 3 color shapes
- Create (poolettes from main pools) Edges

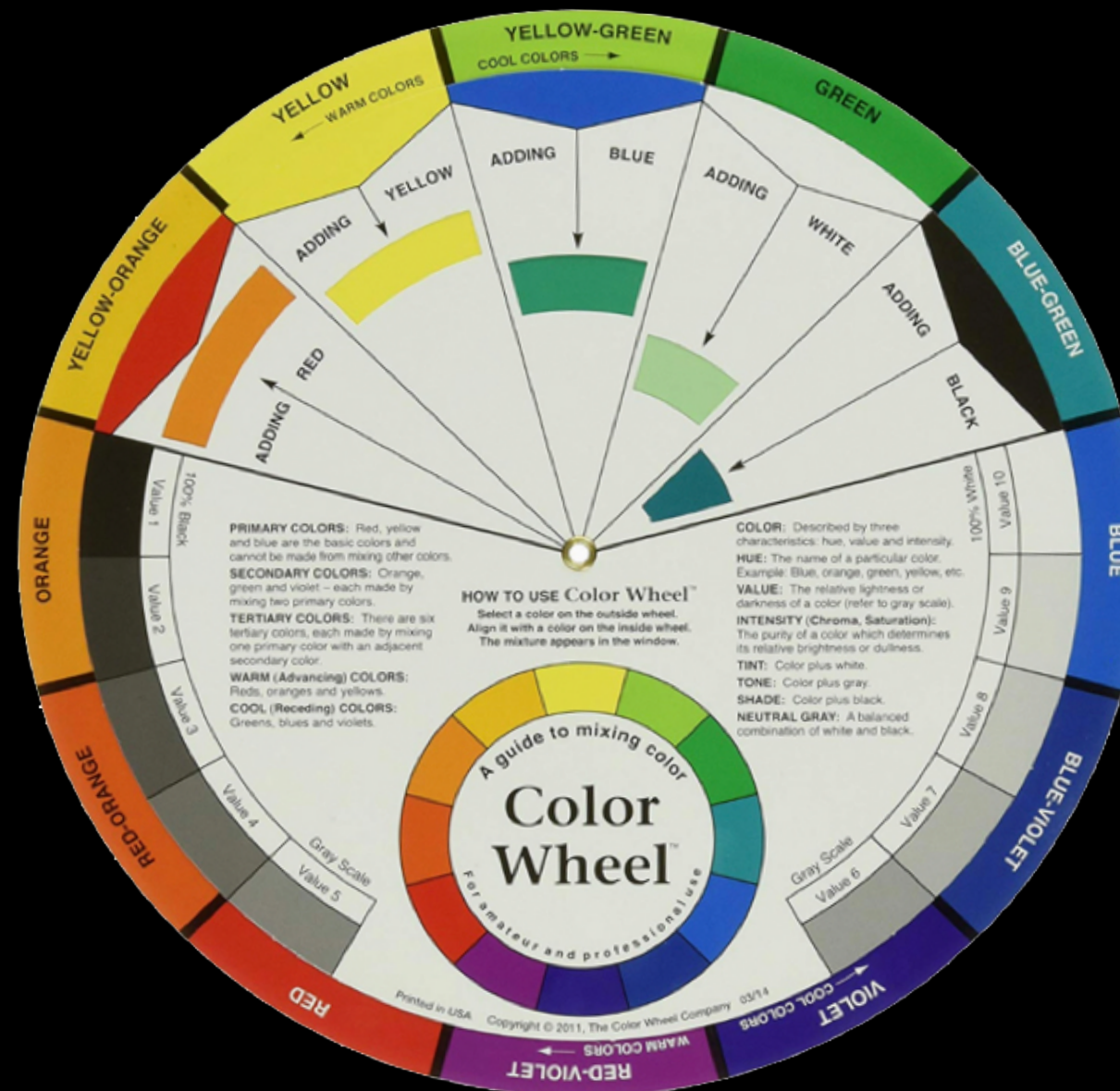
4. Edges

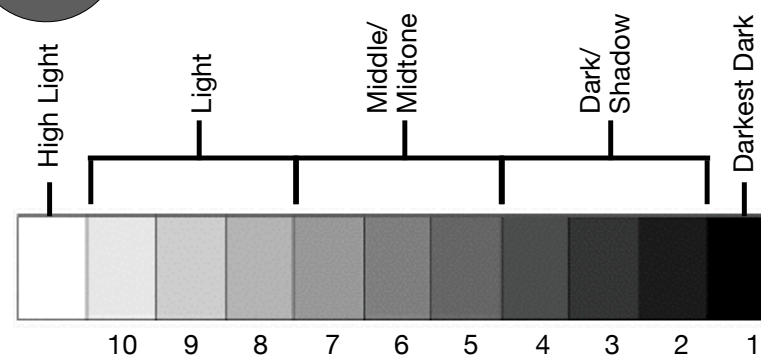
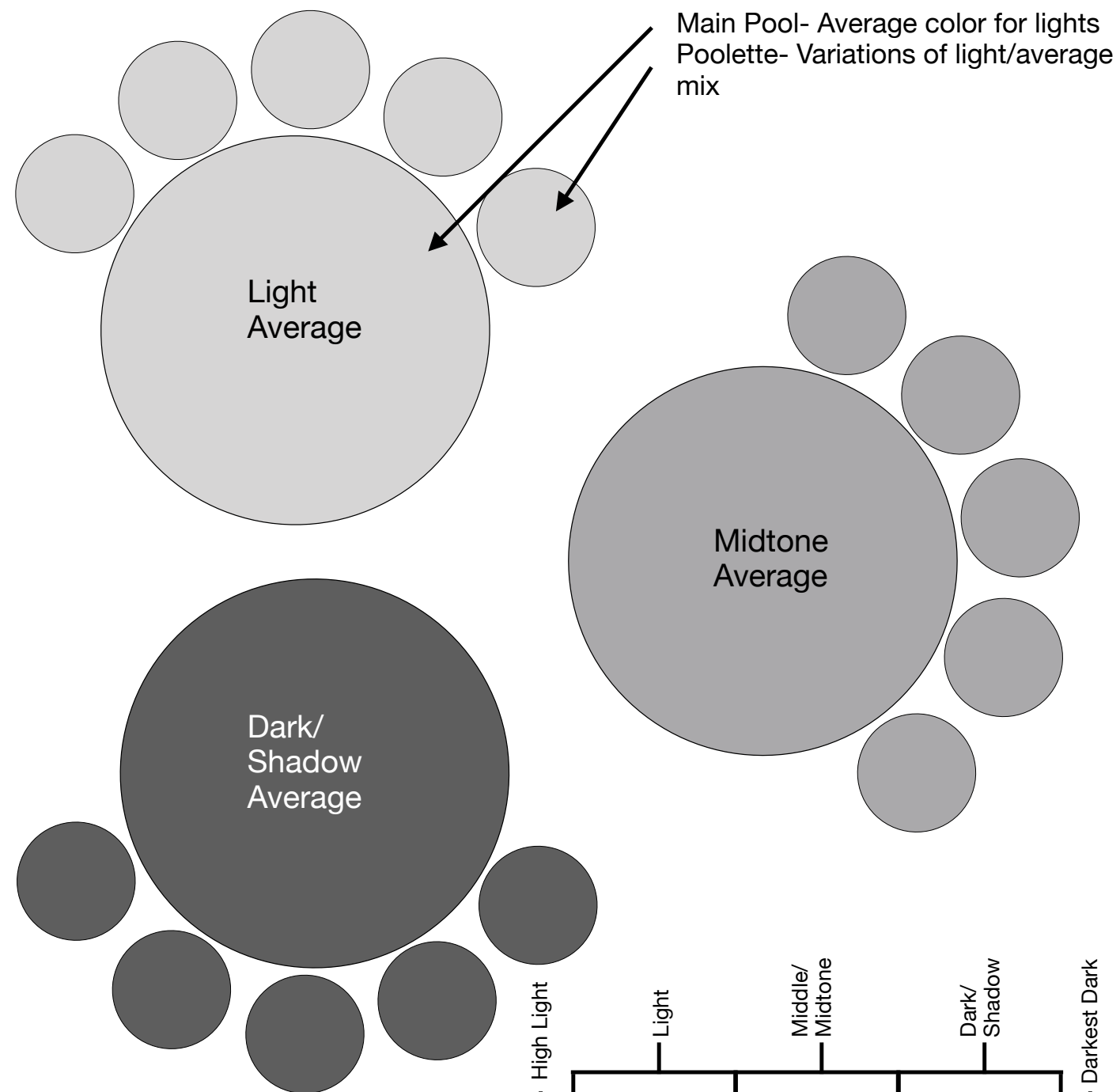
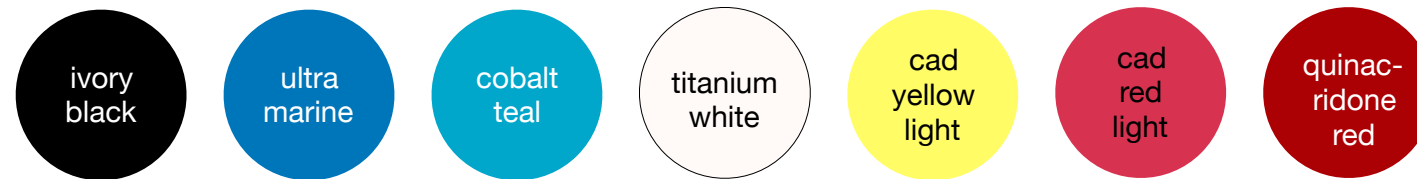
- Look for 3 edge types
- Spend time rendering forms
- Hard
- Soft
- Lost
- add lightest lights
- add darkest darks
- add areas of high Chroma
- add detail



The Limited Palette

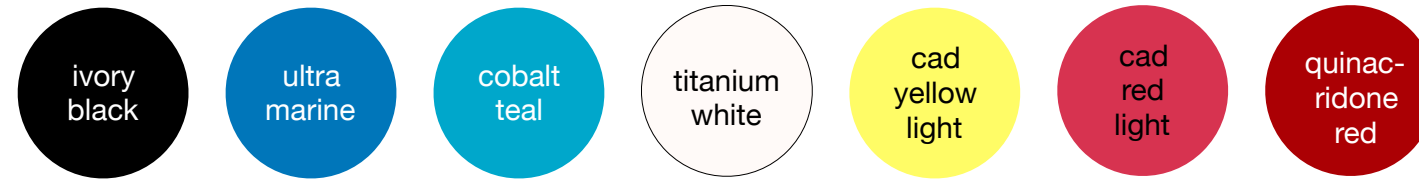
Chromatic Color Wheel







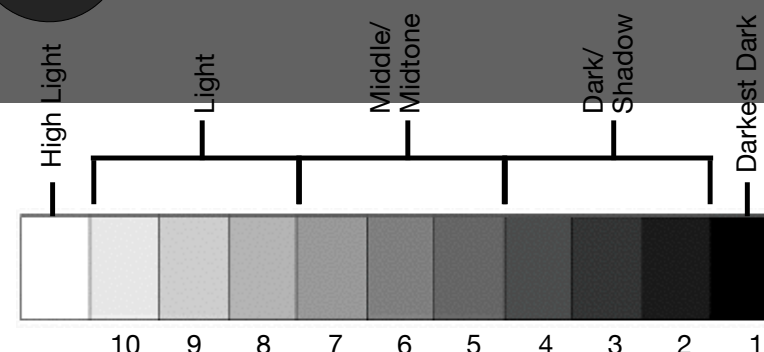
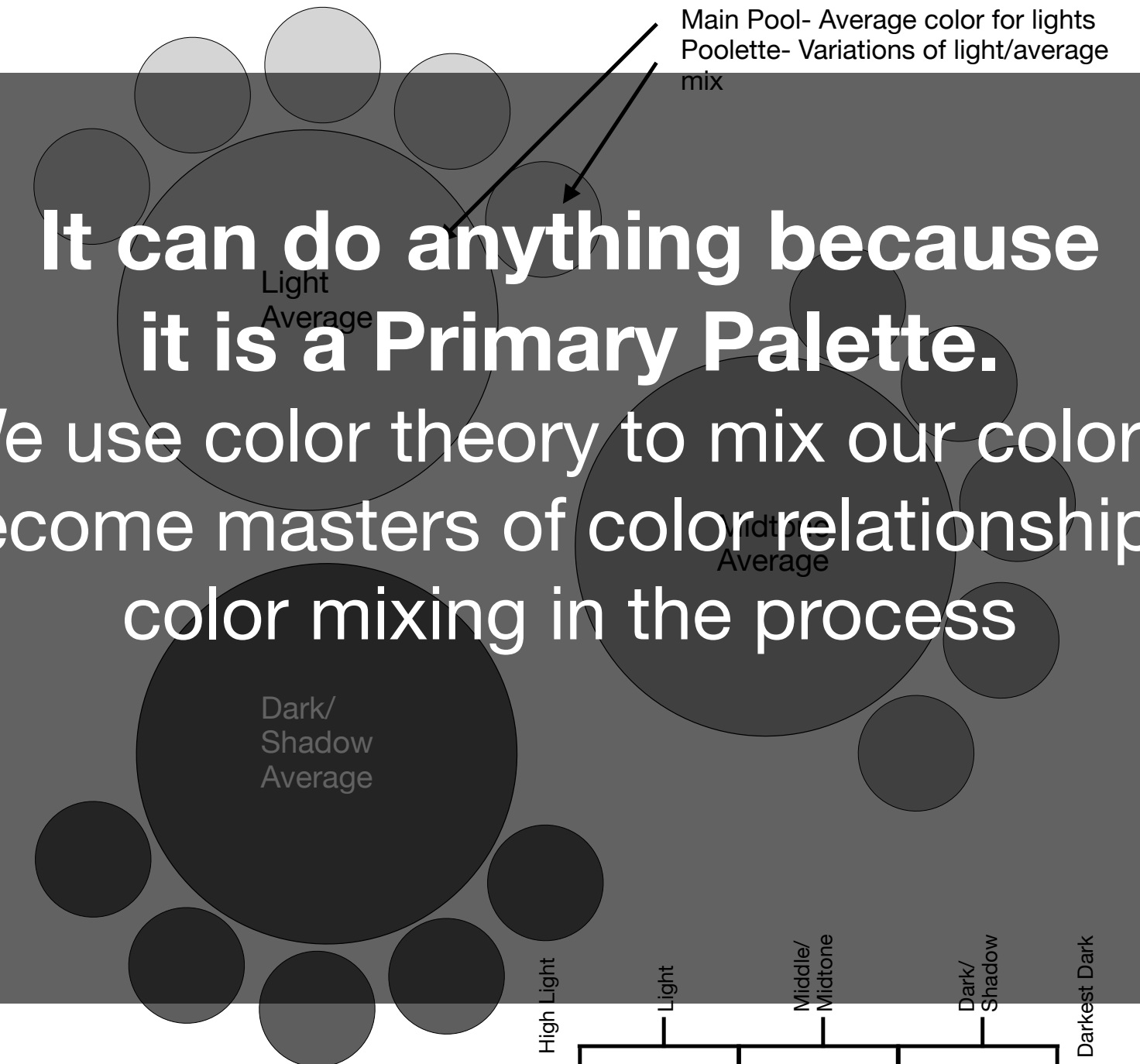
All Painted with the Limited Palette

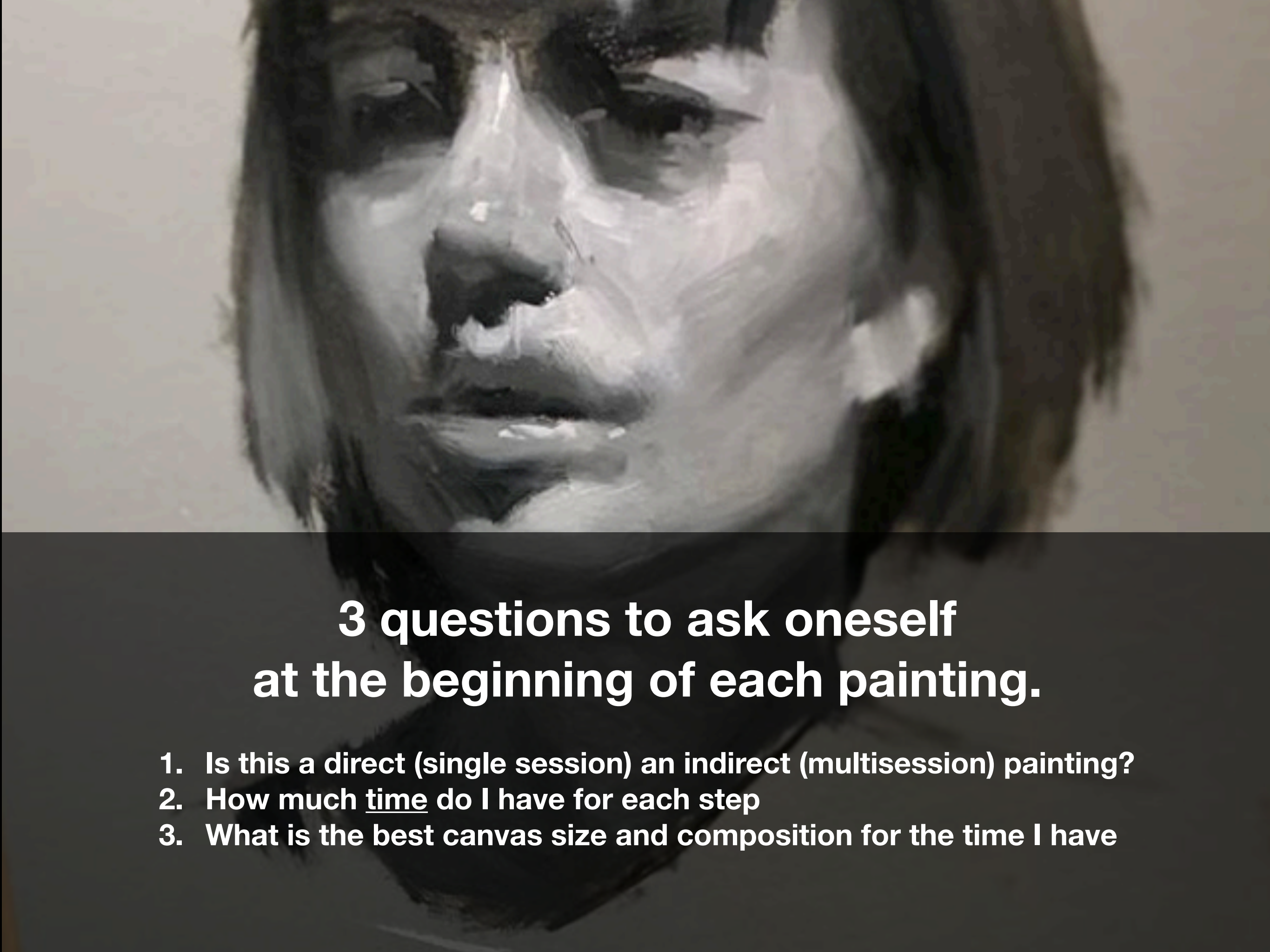


Main Pool- Average color for lights
Poolette- Variations of light/average mix

It can do anything because
it is a Primary Palette.

We use color theory to mix our colors.
We become masters of color relationships and
color mixing in the process





3 questions to ask oneself at the beginning of each painting.

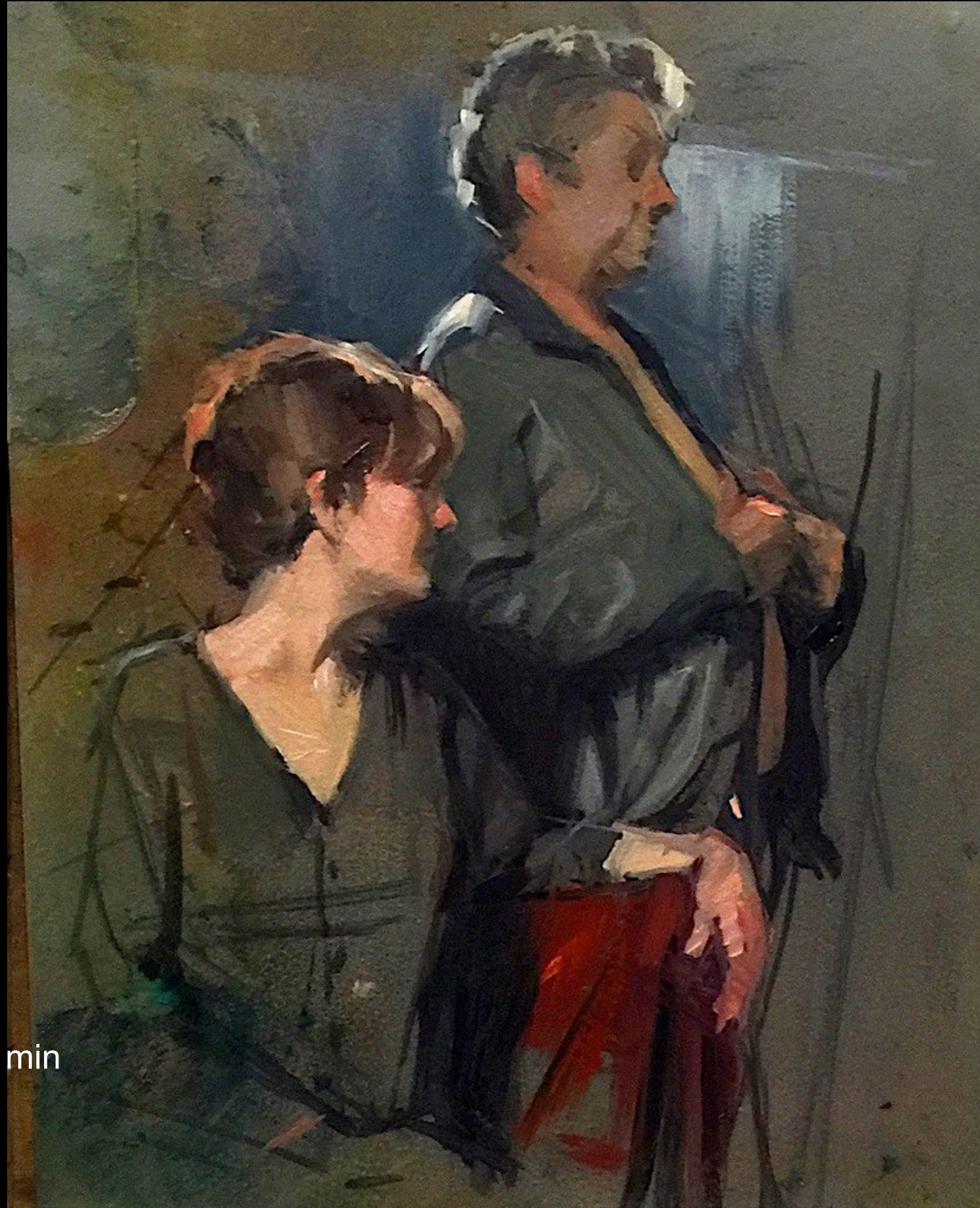
- 1. Is this a direct (single session) an indirect (multisession) painting?**
- 2. How much time do I have for each step**
- 3. What is the best canvas size and composition for the time I have**



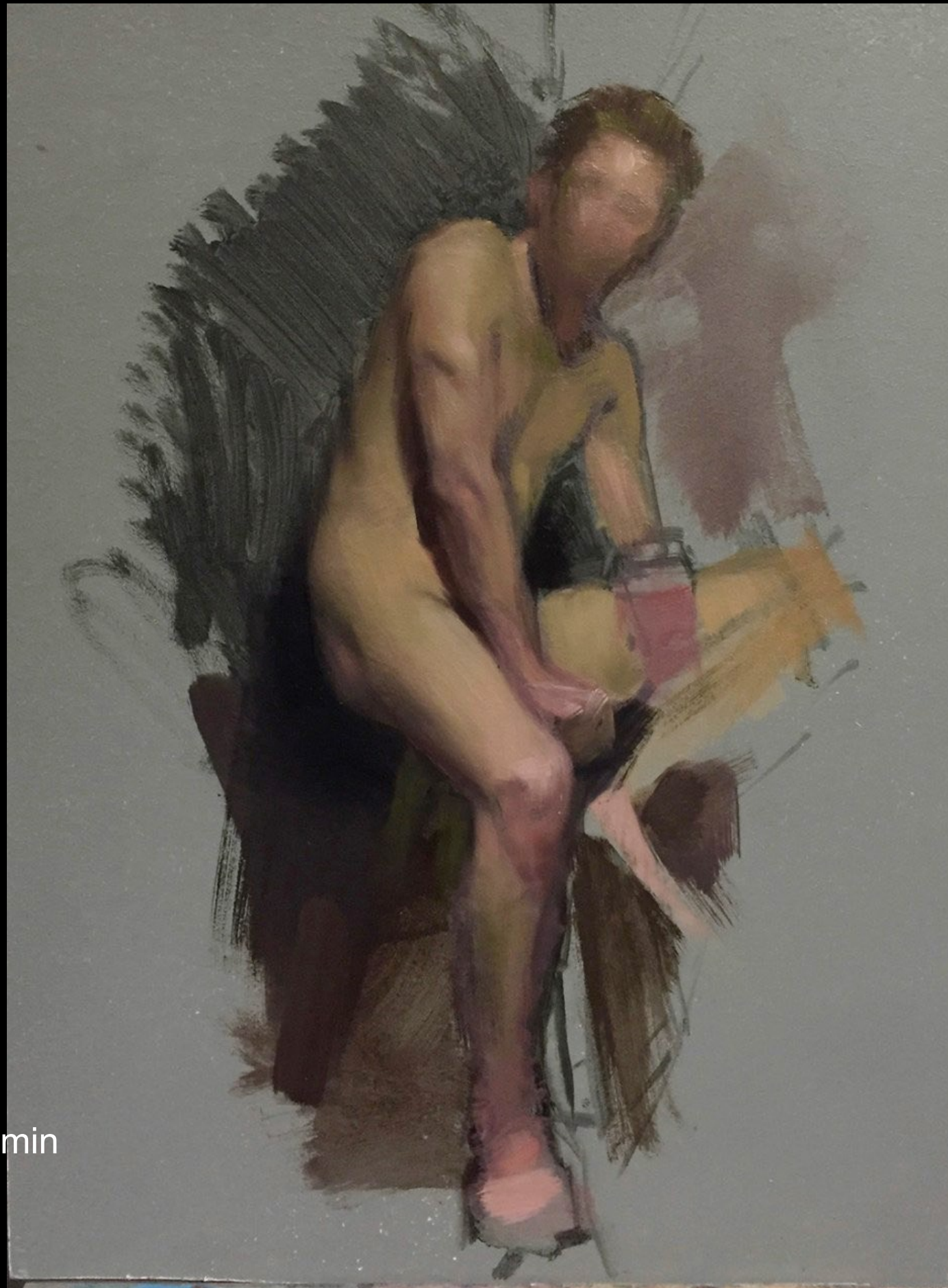
8 hour Painting

Each step is approx 2 hrs.

2.5 hour Painting
Each step is approx 30 min



45 min Painting
Each step is approx 10 min



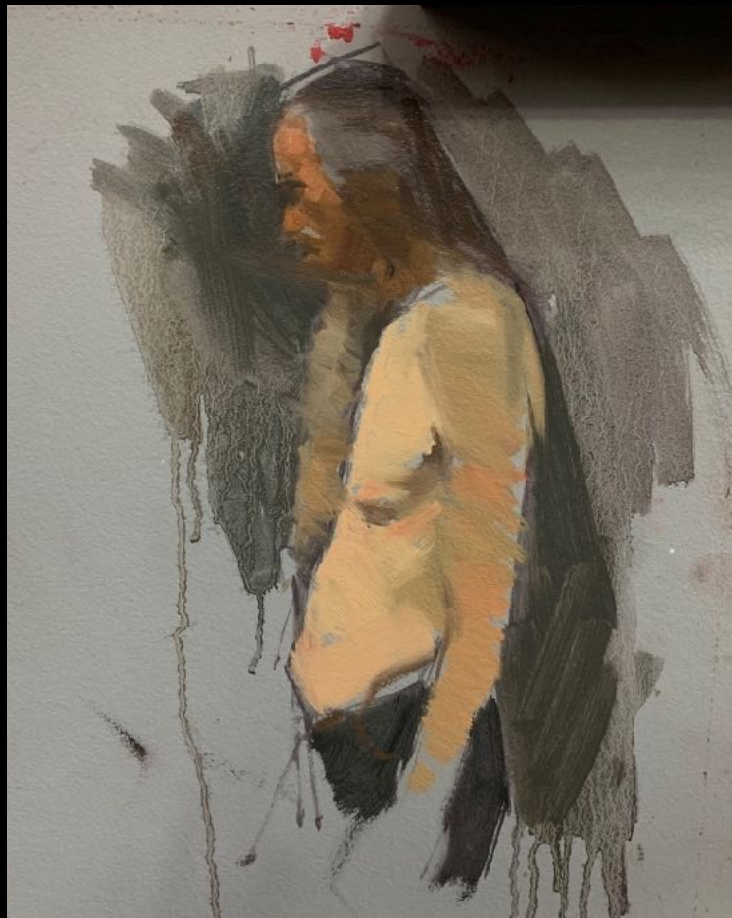


Time each step

- Give the same amount of time for each step,
- Or, give a little extra time to the steps you find the hardest.
- Have a predetermined time limit.

2.5 hour Painting

Each step is approx 30 min



With Practice comes mastery,
practice is the Key!!!

It is a 10 year process...yup,
you are stuck with me for a while :)



Materials



Brushes

Any Professional brushes are fine
I use Rosemary and Co.



BRUSH TYPE / SERIES	SIZE	⊗↕	↔☾
Ivory Extra Long Flat	0	3.4	14.4
Ivory Extra Long Flat	2	5.6	18.5
Classic Filbert	4	9.5	22.5
Classic Filbert	6	12.1	25.6
Classic Filbert	8	14.8	30.5
Series 301. Golden Synthetic	2	1.6	11.3
Series 301. Golden Synthetic	4	2.7	14.4
Eclipse Long Flat	4	8.3	20.4

Paints

I use Gamblin Paint



Panels / Canvas

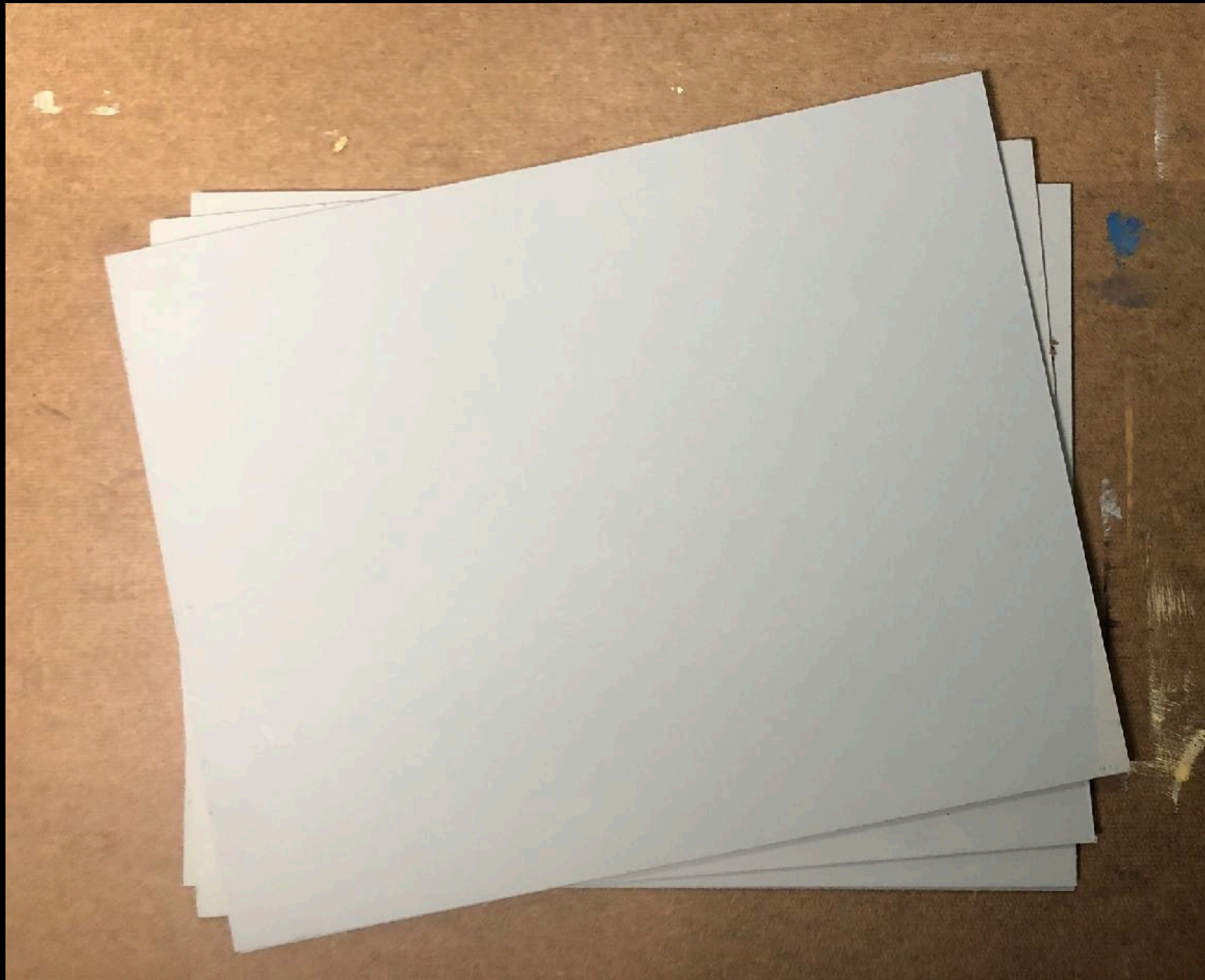
Use either Masonite (hardboard), Canvas, Linen Panels, Stretched Canvas or Linen

Size: 8" x 10", 9" x 11" or 11" x 14"

Tone your Surface: Paint your canvas with 2 coats of grey gesso

I buy black and white gesso and mix it myself, aiming for a 5 or 6 on the Value scale

Quantity: Have 1 or 2 canvases ready for each class



Solvent and Oil

I like to keep it simple and only use Gamsol and Linseed oil.

If I need to make a painting dry quicker I will use W&A Liquin Original



Step 1

PROPORTION

Step 2

VALUE

General Terms

1. Highlight

2. Light

3. Mid-tone

4. Core Shadow

5. Shadow

6. Reflected Light

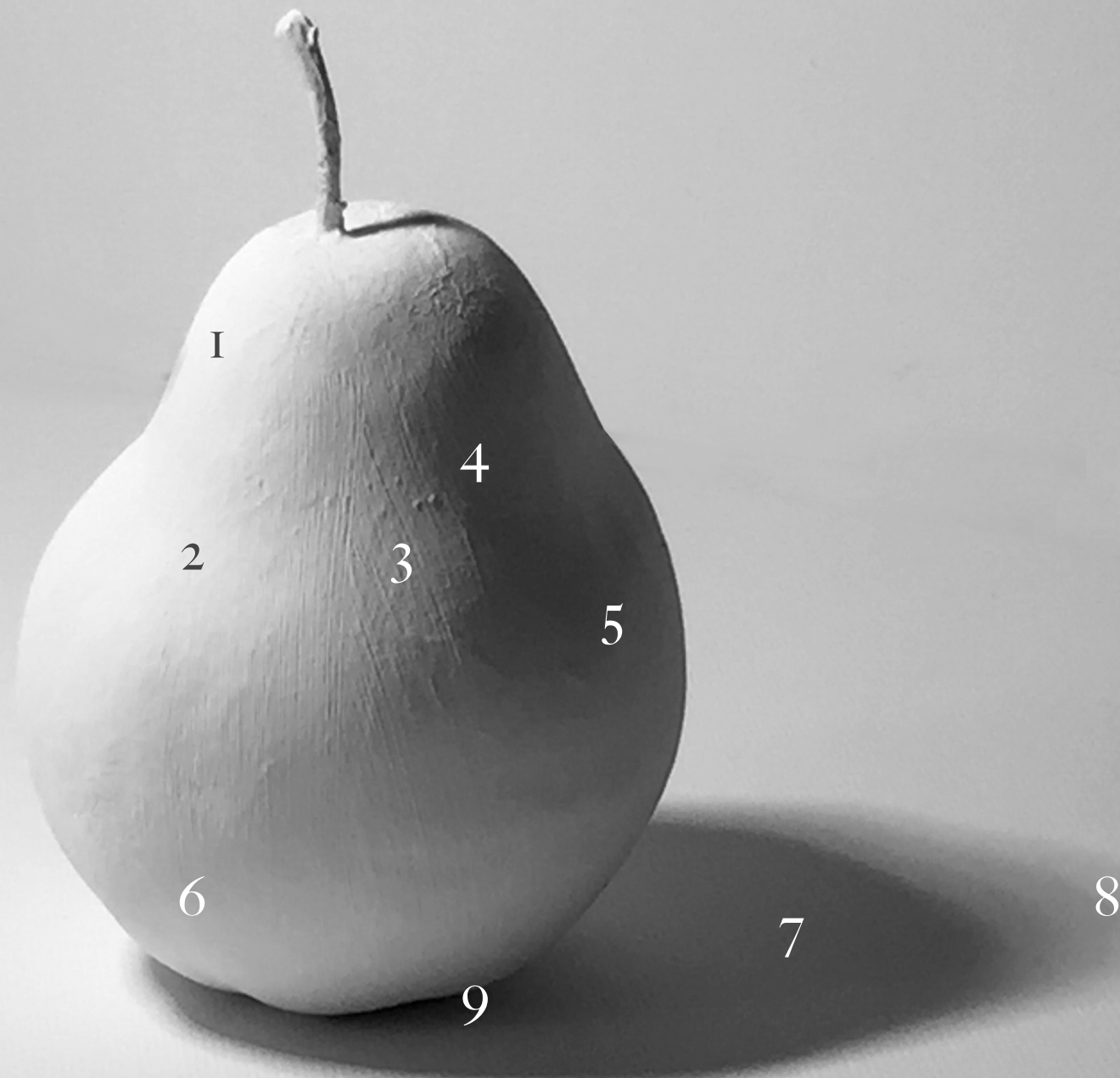
7. Cast Shadow/ Umbra

8. Penumbra

9. Occlusion Shadow



Reading the Value on the Form



1. Highlight

2. Light

3. Mid-tone

4. Core Shadow

5. Shadow

6. Reflected Light

7. Cast Shadow/ Umbra

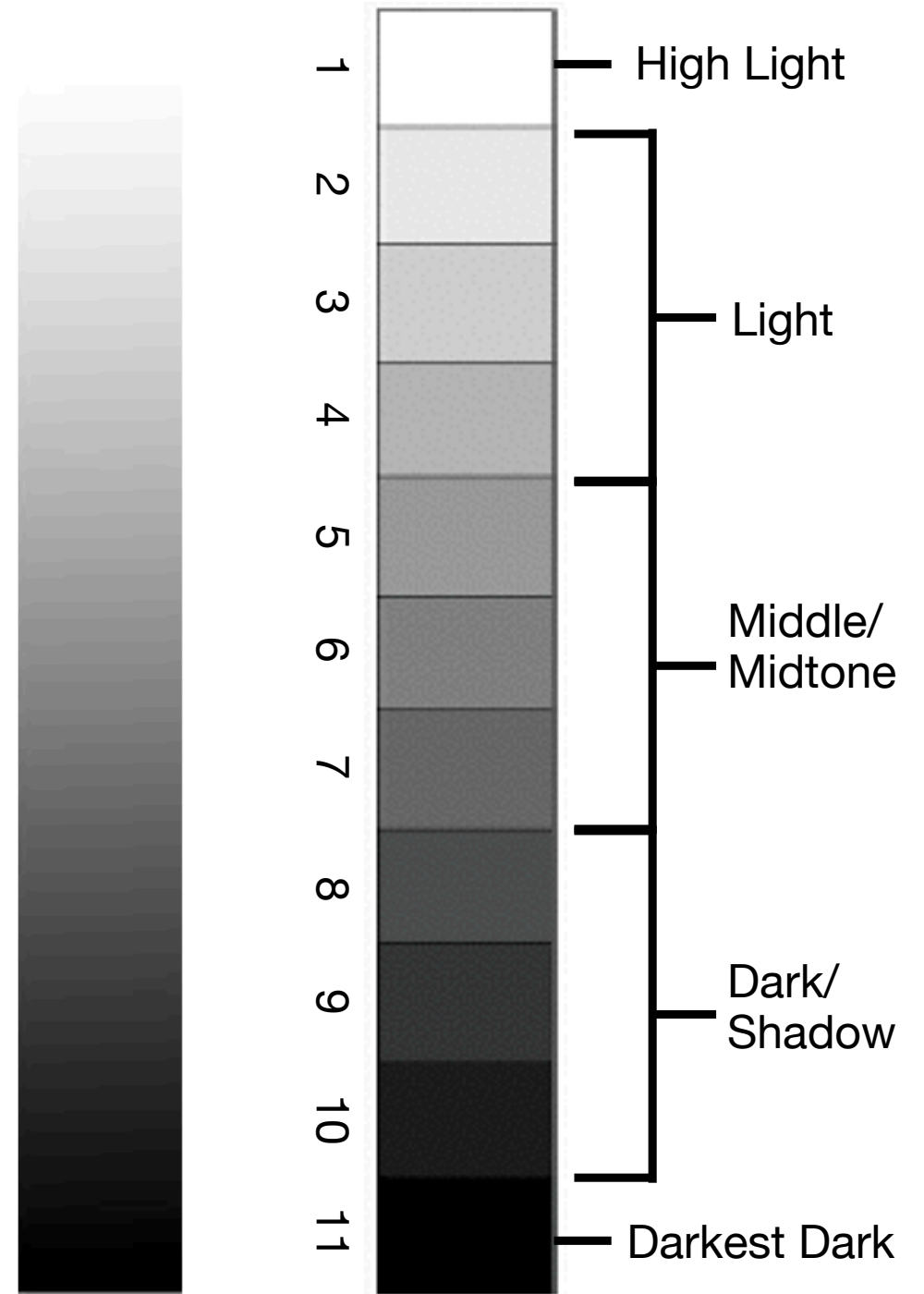
8. Penumbra

9. Occlusion Shadow

Value Scale and Gradient



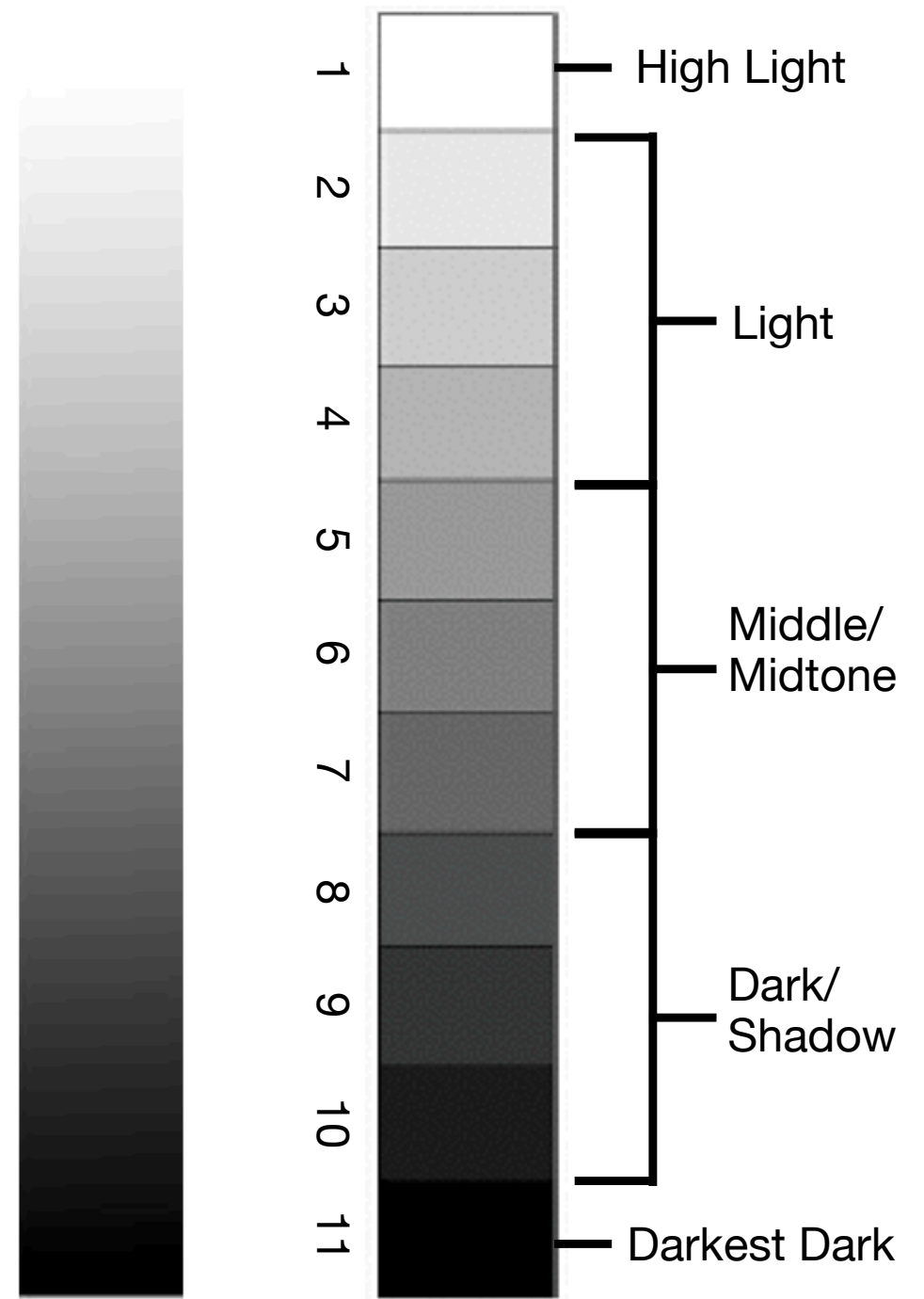
Grayscale Pear



The Value Scale Creates Value Structure



Grayscale Pear



Step 3

COLOR

Basic Color Theory

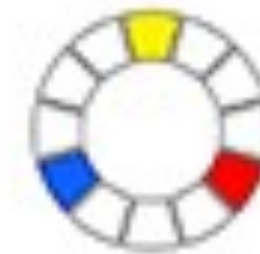
Complimentary

Opposing colors
on wheel. Examples:

Red—Green

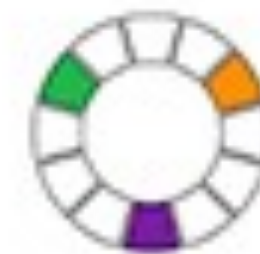
Blue—Orange

Blue-Green—Red-Orange



PRIMARY

YELLOW
RED
BLUE



SECONDARY

ORANGE
VIOLET
GREEN



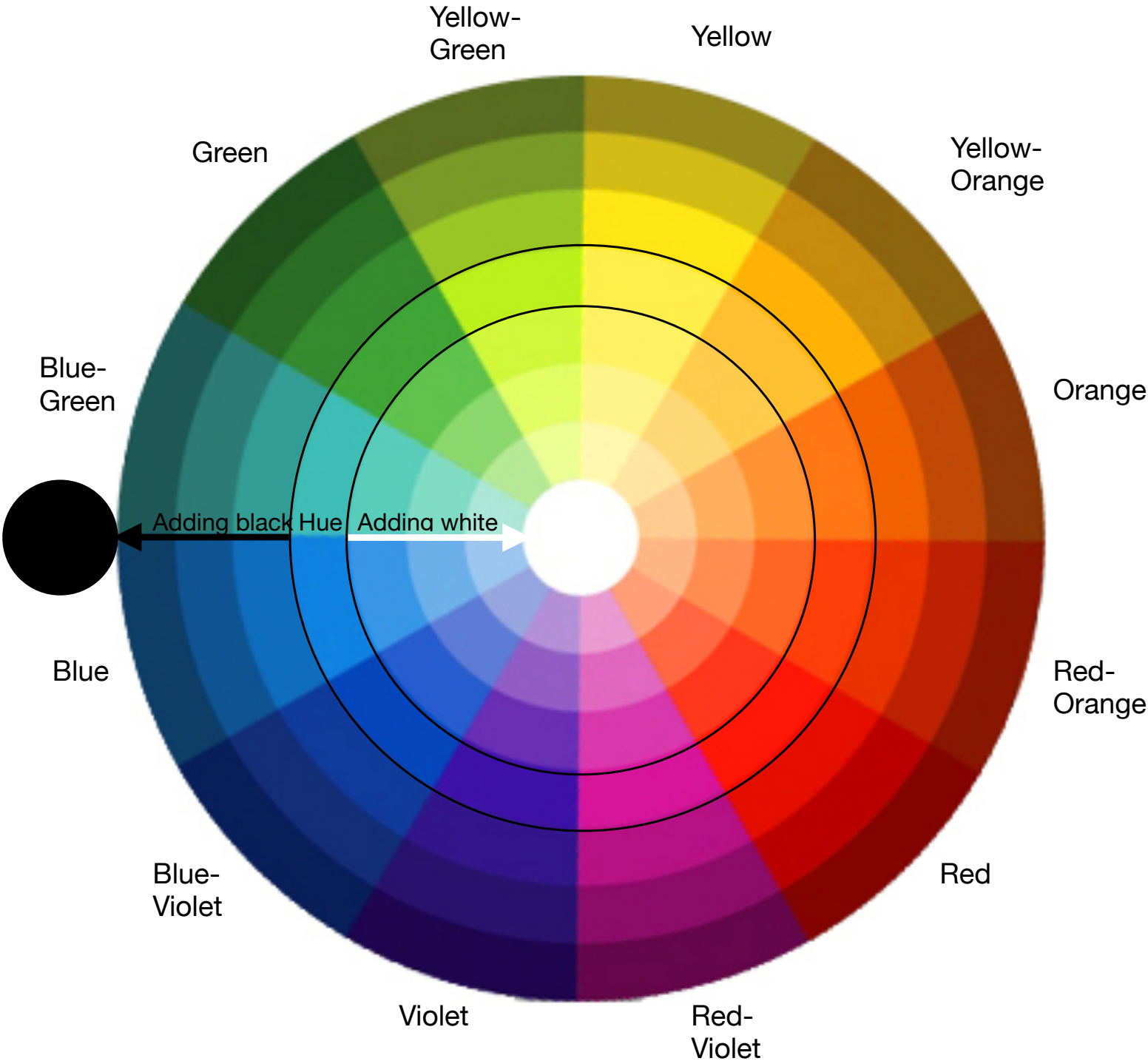
TERTIARY

YELLOW ORANGE
RED ORANGE
RED VIOLET
BLUE VIOLET
BLUE GREEN
YELLOW GREEN

Simplified Color Mixing with 3 Simple Questions

- 1. What is the most obvious Hue in what you are looking at? -*place in A*
 - Has to be a primary, secondary or Tertiary
- 2. Is the Value Lighter or Darker
 - Only use white or black-*place in B*
- 3. Does the color have more of one of the primary, secondary or Tertiary colors or
 - If the color ok but just needs neutralizing you can add its compliment- *place in C*

	Light Ave.	Mid Ave.	Dark Ave.
Hue	<div>A</div>	<div></div>	<div></div>
Value	<div>B</div>	<div></div>	<div></div>
Adj.	<div>C</div>	<div></div>	<div></div>



Step 4

EDGES

What are the main Edge types?

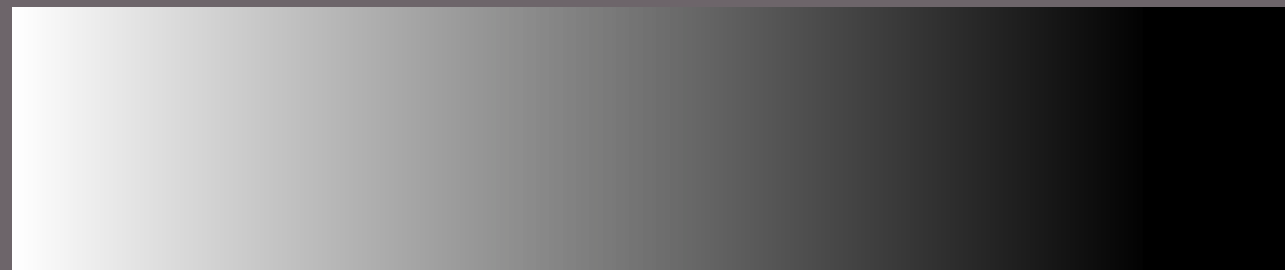
Main Edge Types



Hard



Soft



Lost

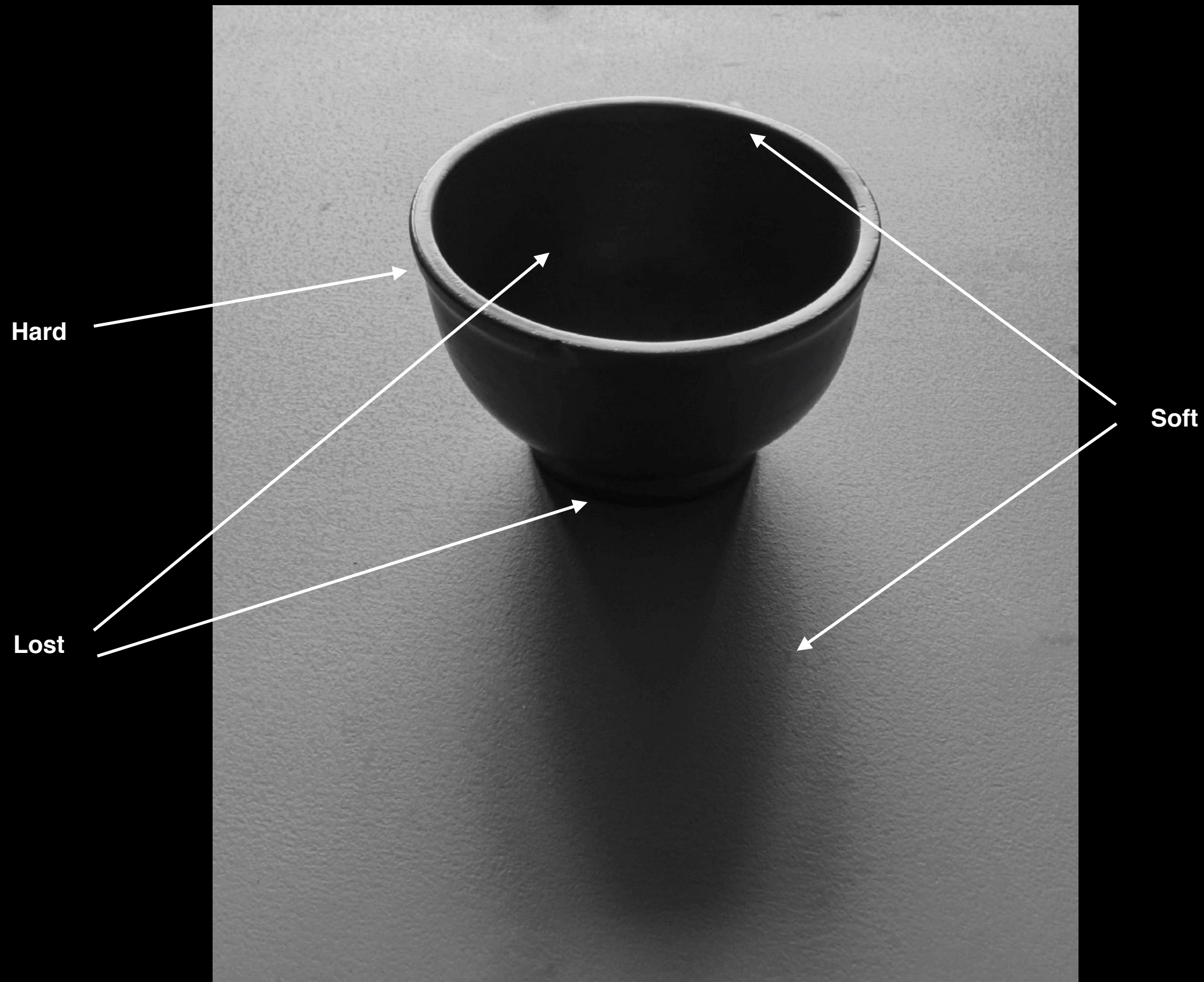
An object with only hard edges



An object with only lost edges

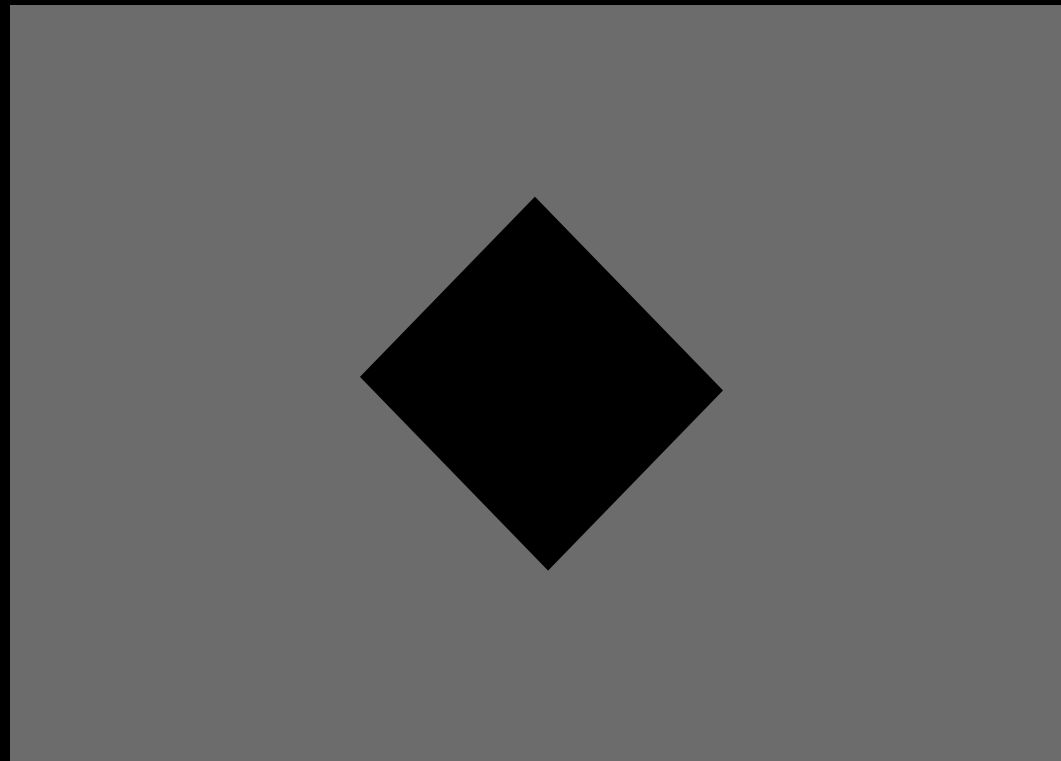


**Only when we have all 3 edge types
do we get the illusion of form and realize it is a bowl**



Color/Value/Edge Isolator

- Make a color finder to isolate
- and abstract elements in your reference
- Take a gray piece of paper and fold it in half
- cut a triangle out of the paper and unfold the paper
- now you have a window to view and isolate colors, values and edges



Private Lessons and Critiques

Take a private lesson from wherever you are in the world. Working one-on-one gives you focused and direct personal instruction. Our lessons help you develop your technical skills so that you can skillfully express your artistic voice.

Our first lesson will be a discussion and critique of your existing work. From this conversation we will develop a lesson plan and schedule that works for you.

- Lessons held online using Zoom conference
- New Students need to start with an Introductory lesson
- Students can choose a 25min, 40min, 55min or Lesson
- Package Price- Buy 10 lessons and get one lesson free!
- Pricing and Info at the Link Below:

<https://www.dominiquemedici.com/private-lessons>

Original Paintings Available



There is something about the directness and rawness in unfinished work that grips us and speaks to us in a more intimate way than an over polished painting. Studies make beautiful paintings because of their intensity and freshness in the brushwork. At the same time they are great learning tools for students and serve several purposes.

A demo from the class you were in is like having the lessons at your fingertips. Copying the demo from life gives you deeper insight into the process and is a good practice to drive the lessons from the class deeper. To see available work visit:

www.dominiquemedici.com/store